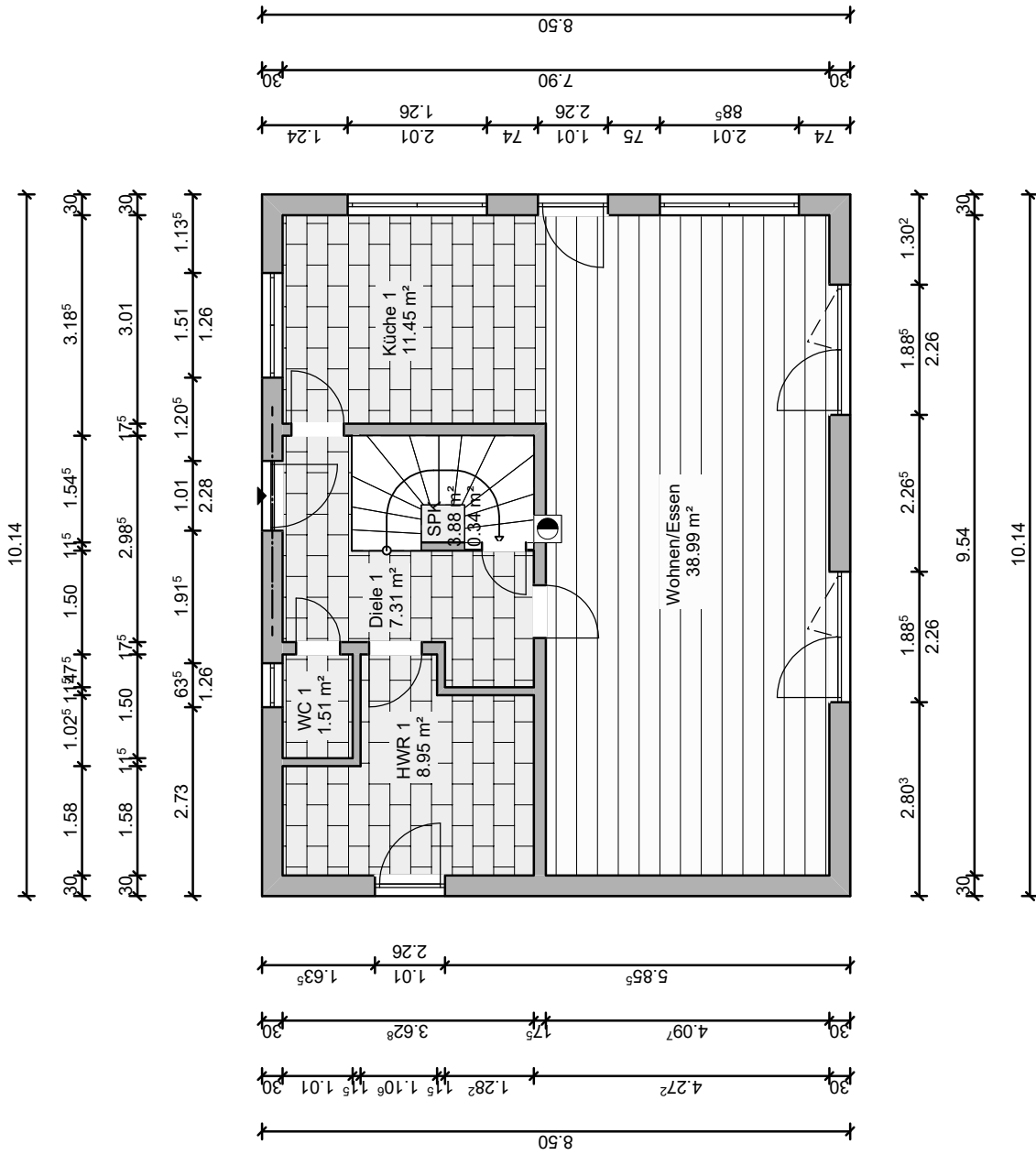
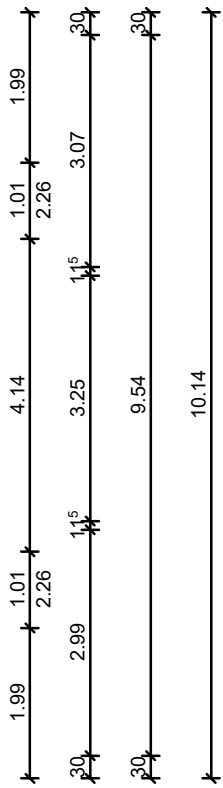
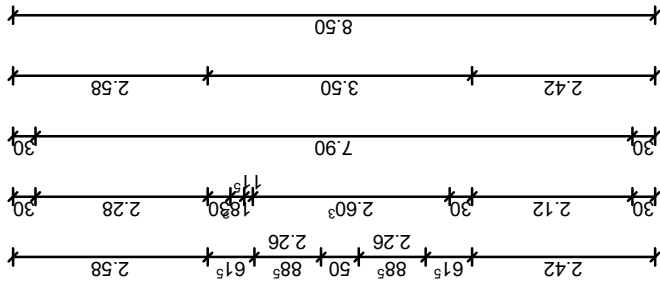
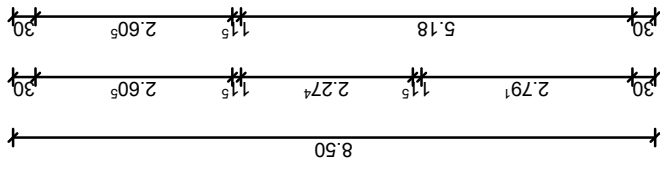
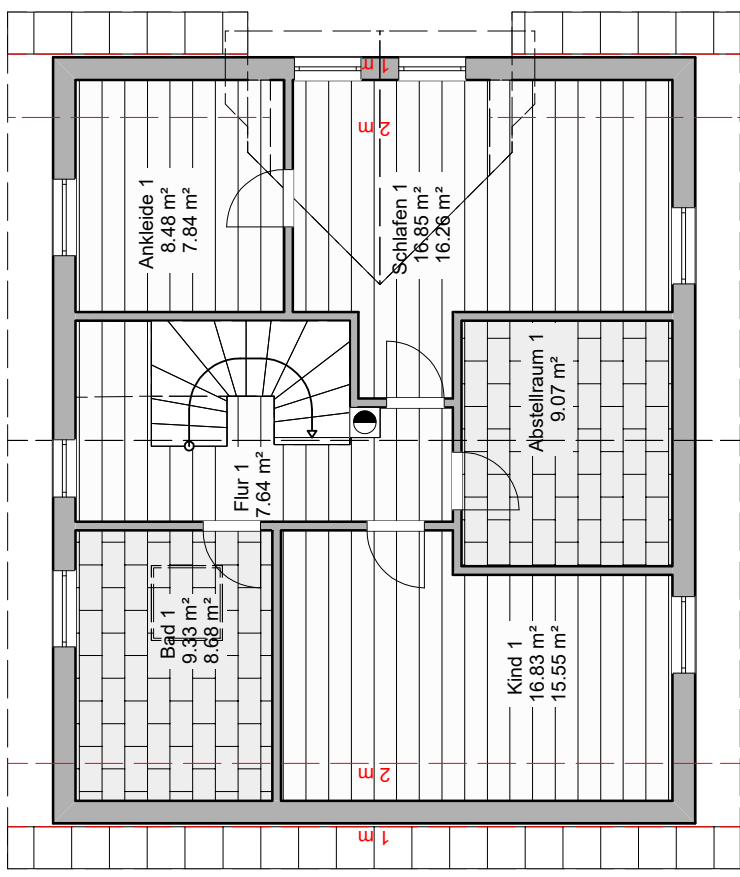
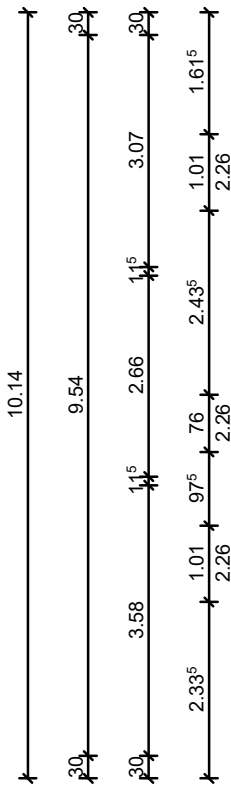
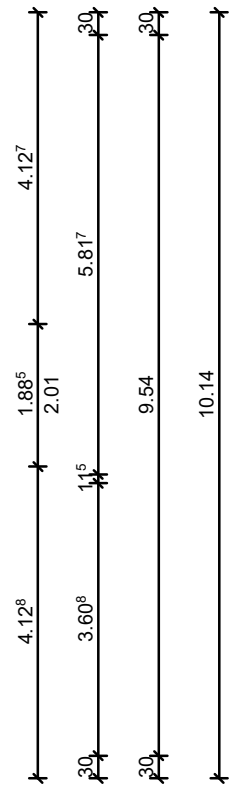
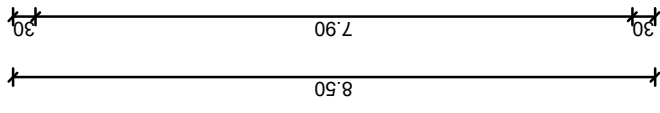
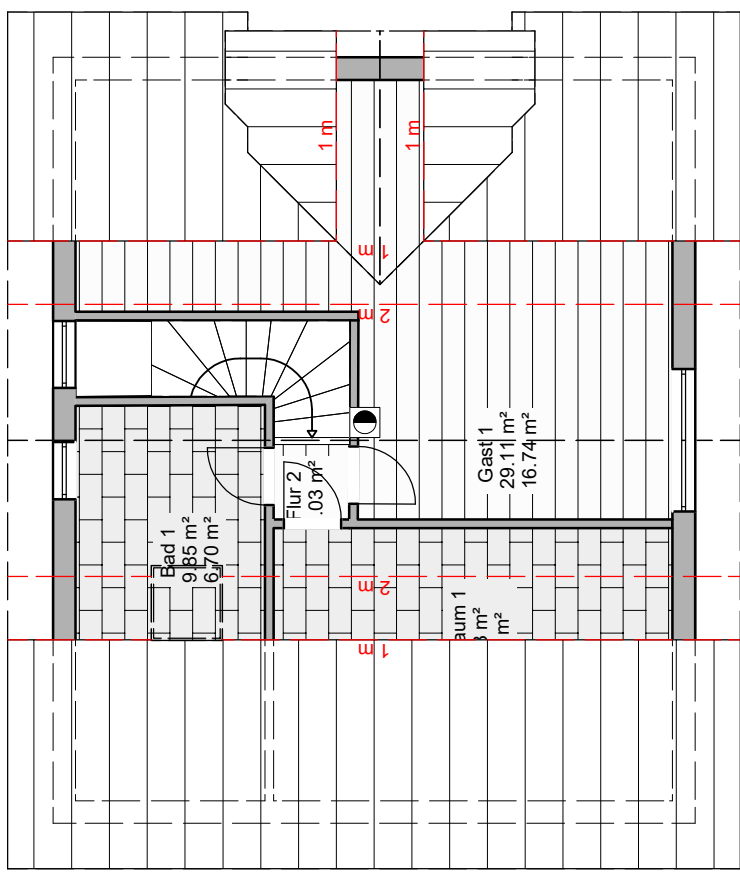
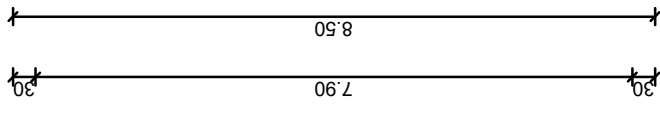
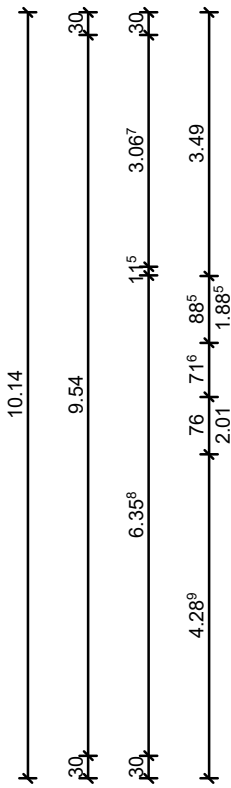


# Grundrissvariante 2 gegen Mehrpreis

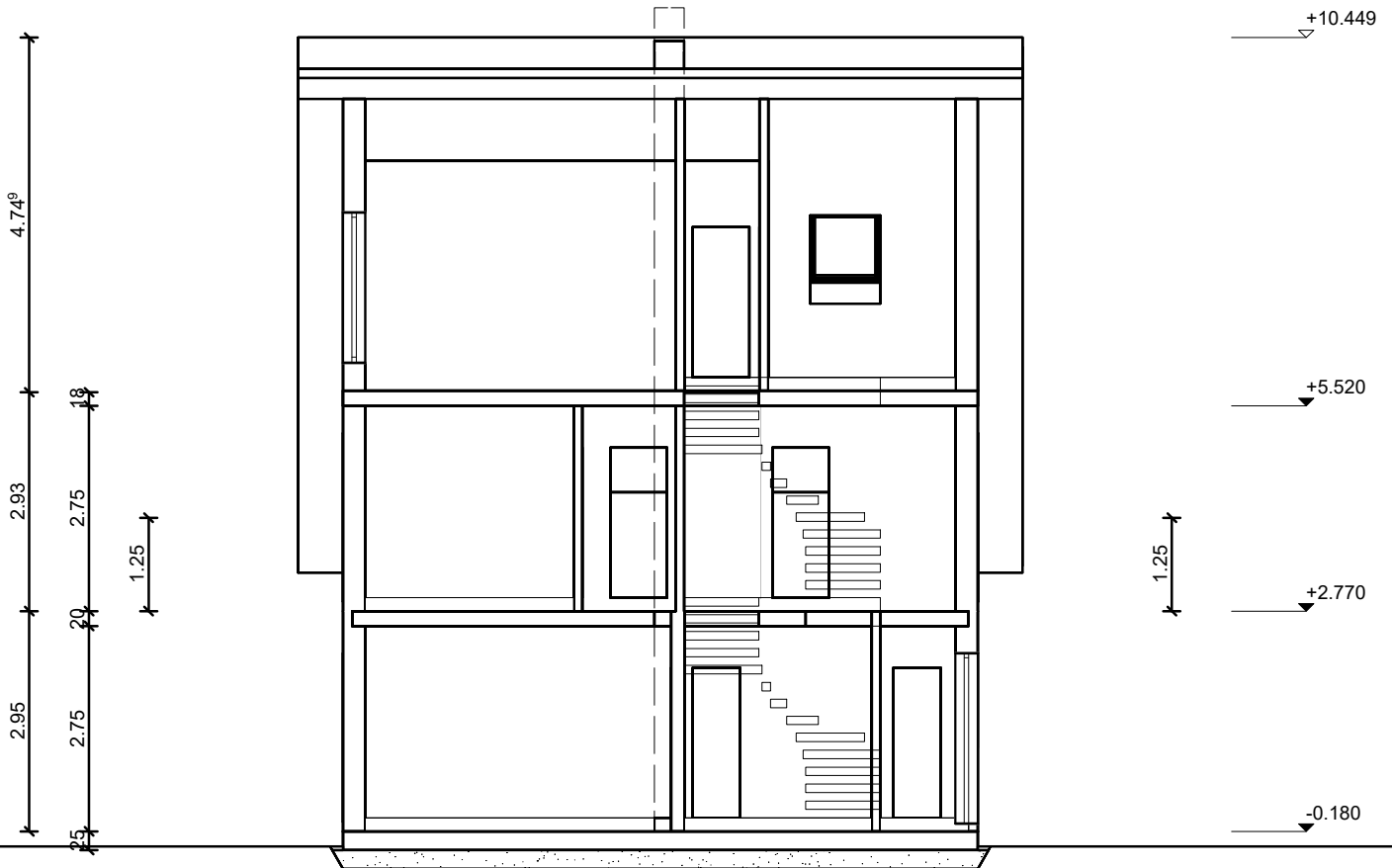






Dachkonstruktion lt. Statik

Dachneigung: 50.0°



Bodenplatte C25/30 d=25cm

Filterschicht 0/40 d=25cm

Dachkonstruktion lt. Statik

Dachneigung: 50.0°



Bodenplatte C25/30 d=25cm  
Filterschicht 0/40 d=25cm

